

Report No.:

Test Time: 2019/11/4 9:32:52

## LUMINAIRE PHOTOMETRIC TEST REPORT

### Luminaire Property

Manufacturer:  
 Luminaire Type: MD18002-800+600  
 Lamp Type:  
 Luminous Width: 0 mm  
 Luminous Length: 0 mm  
 Luminous Height: 0 mm

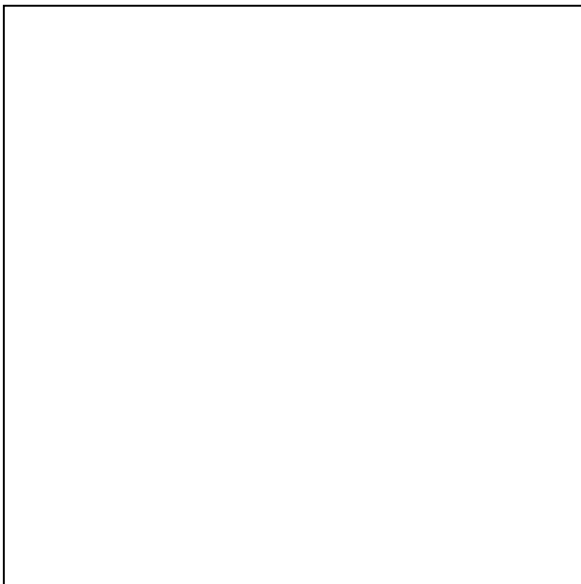
Voltage(V): 220.77 V  
 Current(A): 0.4790 A  
 Power(W): 103.17 W  
 Power Factor: 0.9750  
 Lamp Luminous Flux: 5942.91

### Photometric Results

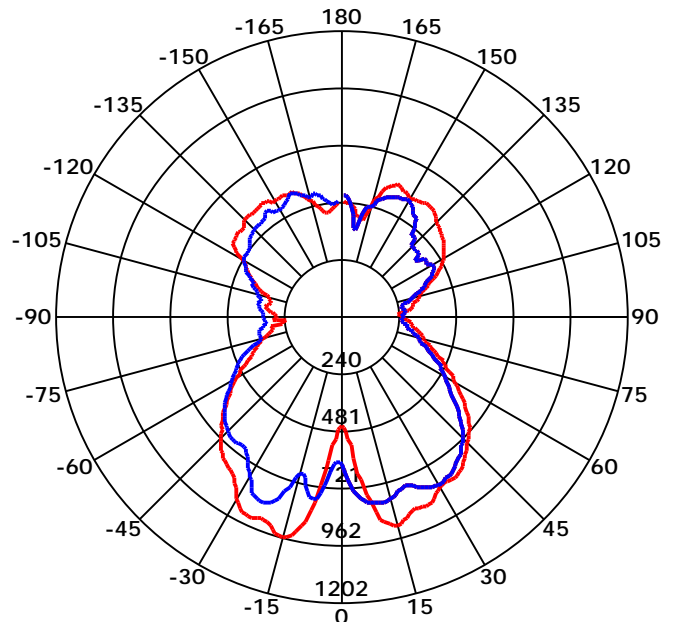
CIE Class: Direct  
 Luminaire Luminous Flux: 5942.911  
 Downward Ratio: 56.33%  
 Luminaire Efficacy Rating(LER): 57.60 lm/W  
 Beam Angle(50%Imax): L=-11.77 R=47.93  
 Field Angle(10%Imax): L=0.00 R=0.00

Max. Intensity: 961.73 cd  
 Max.Intensity Angle: C=180 Gamma=15  
 Upward Ratio: 43.67%  
 Efficacy: 100.00%  
 Center Intensity: 454.06 cd

Picture of Luminaire



Luminous Intensity Distribution Curve



Beam Angle(50%Imax): 59.70 deg

C0-180 ——— C90-270 ———

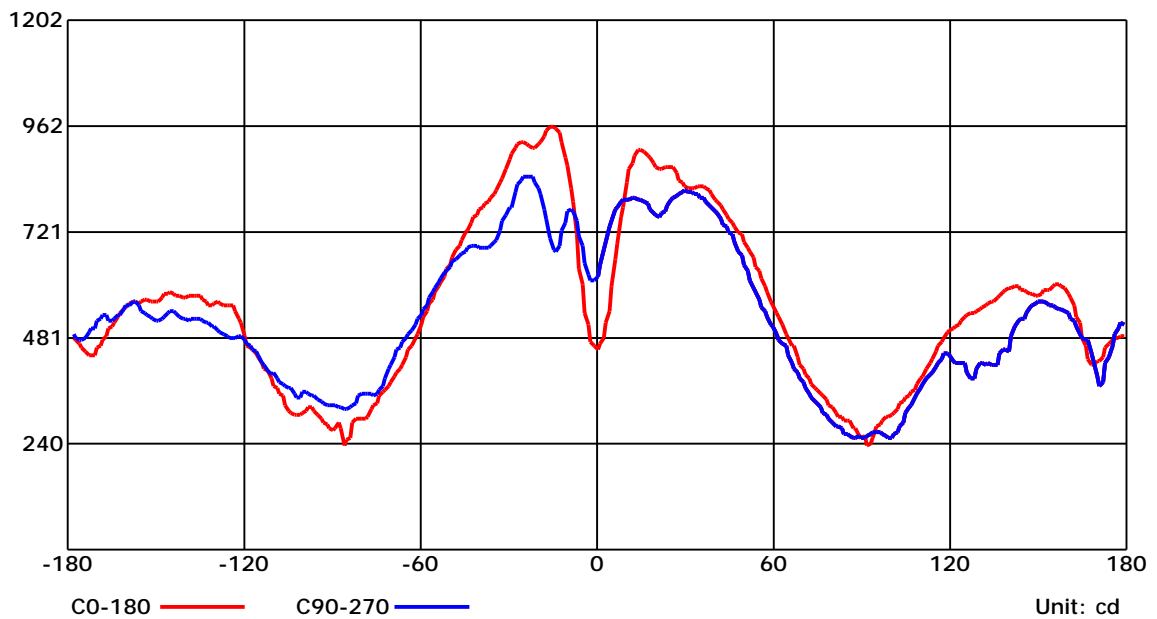
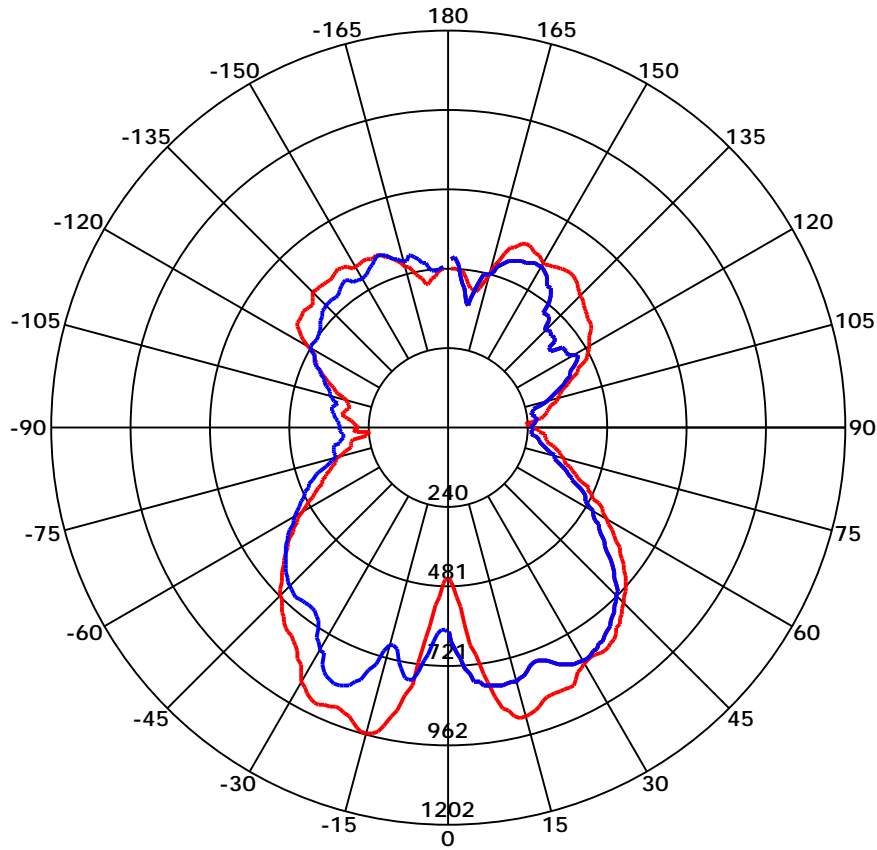
C Range: 0 - 360 Deg  
 C Interval: 45.0 Deg  
 Test Speed: High  
 Temperature:  
 Operators:  
 Test Date: 2019/11/4 9:32:52

G Range: 0 - 180 Deg  
 G Interval: 1.0 Deg  
 Test System: Huipu CPM-1800B Goniophotometer  
 Humidity:  
 Test Distance: 5.95 m  
 Remarks:

Report No.:

Test Time: 2019/11/4 9:32:52

### Luminous Intensity Distribution Curve



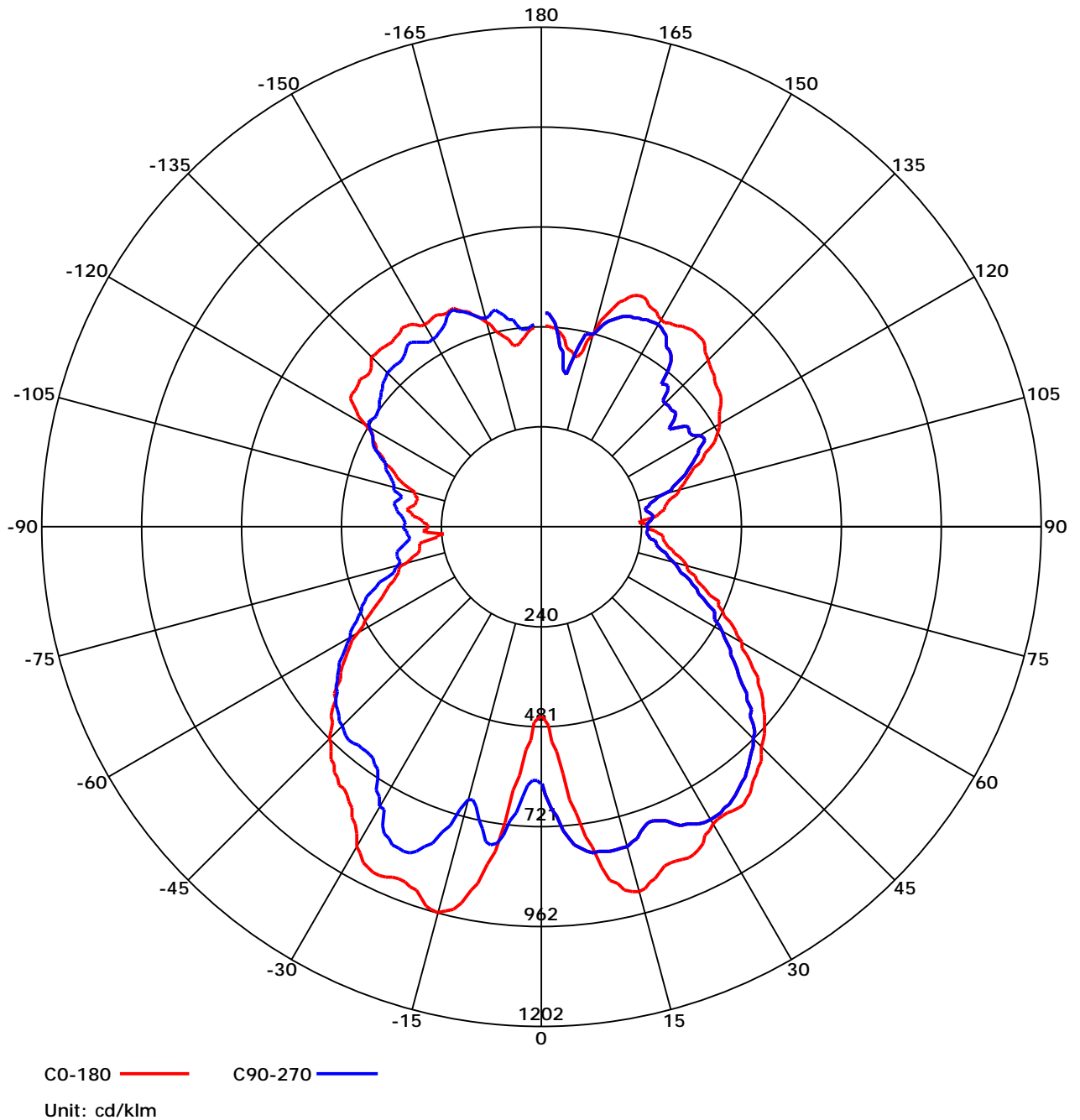
C Range: 0 - 360 Deg  
 C Interval: 45.0 Deg  
 Test Speed: High  
 Temperature:  
 Operators:  
 Test Date: 2019/11/4 9:32:52

G Range: 0 - 180 Deg  
 G Interval: 1.0 Deg  
 Test System: Huipu CPM-1800B Goniophotometer  
 Humidity:  
 Test Distance: 5.95 m  
 Remarks:

Report No.:

Test Time: 2019/11/4 9:32:52

## Luminous Intensity Distribution Curve



C Range: 0 - 360 Deg  
 C Interval: 45.0 Deg  
 Test Speed: High  
 Temperature:  
 Operators:  
 Test Date: 2019/11/4 9:32:52

G Range: 0 - 180 Deg  
 G Interval: 1.0 Deg  
 Test System: Huipu CPM-1800B Goniophotometer  
 Humidity:  
 Test Distance: 5.95 m  
 Remarks:

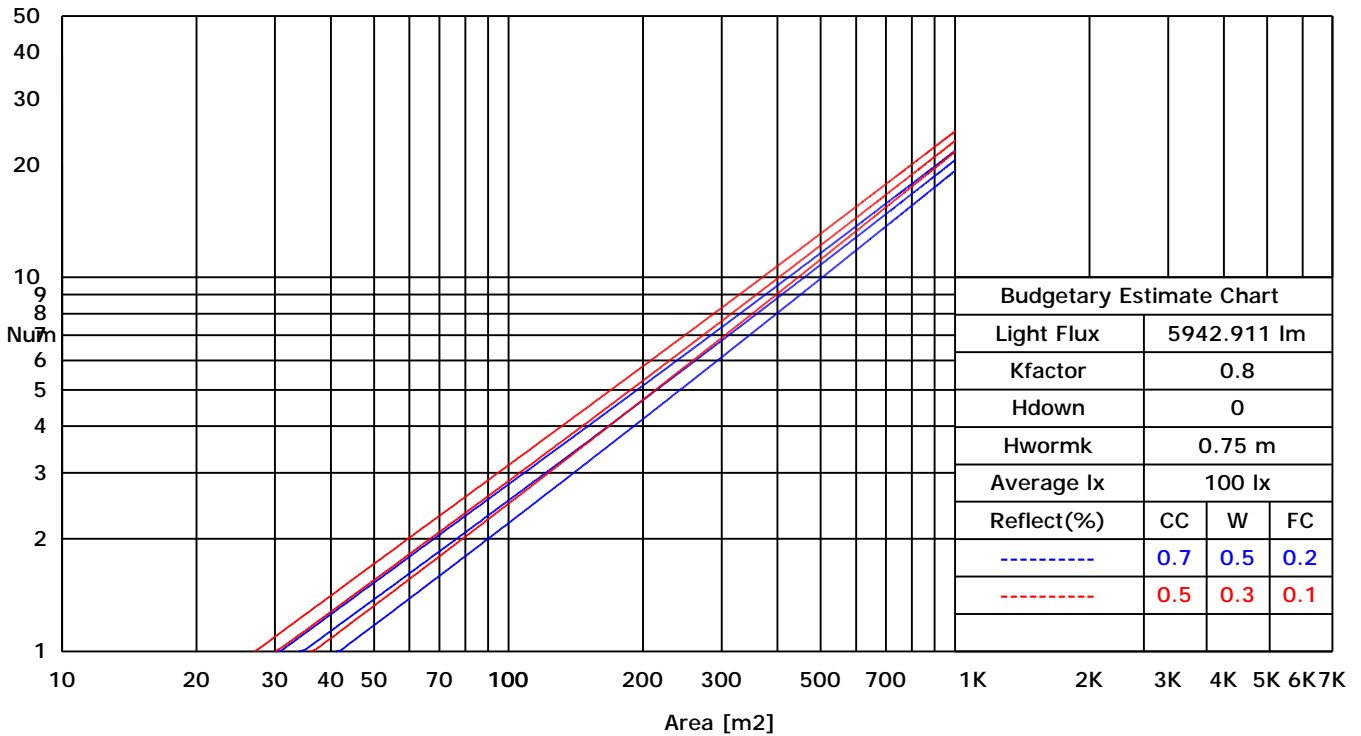
Report No.:

Test Time: 2019/11/4 9:32:52

### UTILIZATION FACTORS TABLE

RHOCC	80			70			50			30			10			0
RHOW	50	30	10	50	30	10	50	30	10	50	30	10	50	30	10	0
RCR	COEFFICIENTS OF UTILIZATION FOR RHOFC=20															
0	1.19	1.19	1.19	1.16	1.16	1.16	1.11	1.11	1.11	1.06	1.06	1.06	1.02	1.02	1.02	1.00
1	1.07	1.05	1.04	1.05	1.04	1.02	1.02	1.00	0.98	0.97	0.95	0.93	0.90	0.88	0.86	0.81
2	0.98	0.96	0.94	0.96	0.94	0.92	0.93	0.91	0.88	0.89	0.86	0.84	0.84	0.81	0.78	0.73
3	0.90	0.88	0.87	0.90	0.87	0.85	0.87	0.84	0.81	0.84	0.80	0.77	0.80	0.76	0.72	0.68
4	0.85	0.83	0.82	0.84	0.82	0.80	0.82	0.79	0.76	0.79	0.75	0.72	0.76	0.72	0.68	0.64
5	0.80	0.79	0.77	0.80	0.77	0.76	0.78	0.75	0.72	0.76	0.72	0.69	0.73	0.68	0.64	0.61
6	0.77	0.75	0.74	0.76	0.74	0.72	0.75	0.71	0.69	0.73	0.69	0.65	0.70	0.65	0.62	0.58
7	0.74	0.72	0.71	0.73	0.71	0.70	0.72	0.69	0.66	0.70	0.66	0.63	0.68	0.63	0.59	0.56
8	0.71	0.70	0.69	0.71	0.69	0.67	0.70	0.66	0.64	0.68	0.64	0.61	0.66	0.61	0.57	0.54
9	0.69	0.68	0.67	0.69	0.67	0.65	0.68	0.64	0.62	0.66	0.62	0.59	0.64	0.59	0.56	0.53
10	0.68	0.66	0.65	0.67	0.65	0.64	0.66	0.63	0.61	0.64	0.60	0.58	0.62	0.58	0.54	0.51

### LUMINAIRE BUDGETARY ESTIMATE DIAGRAM



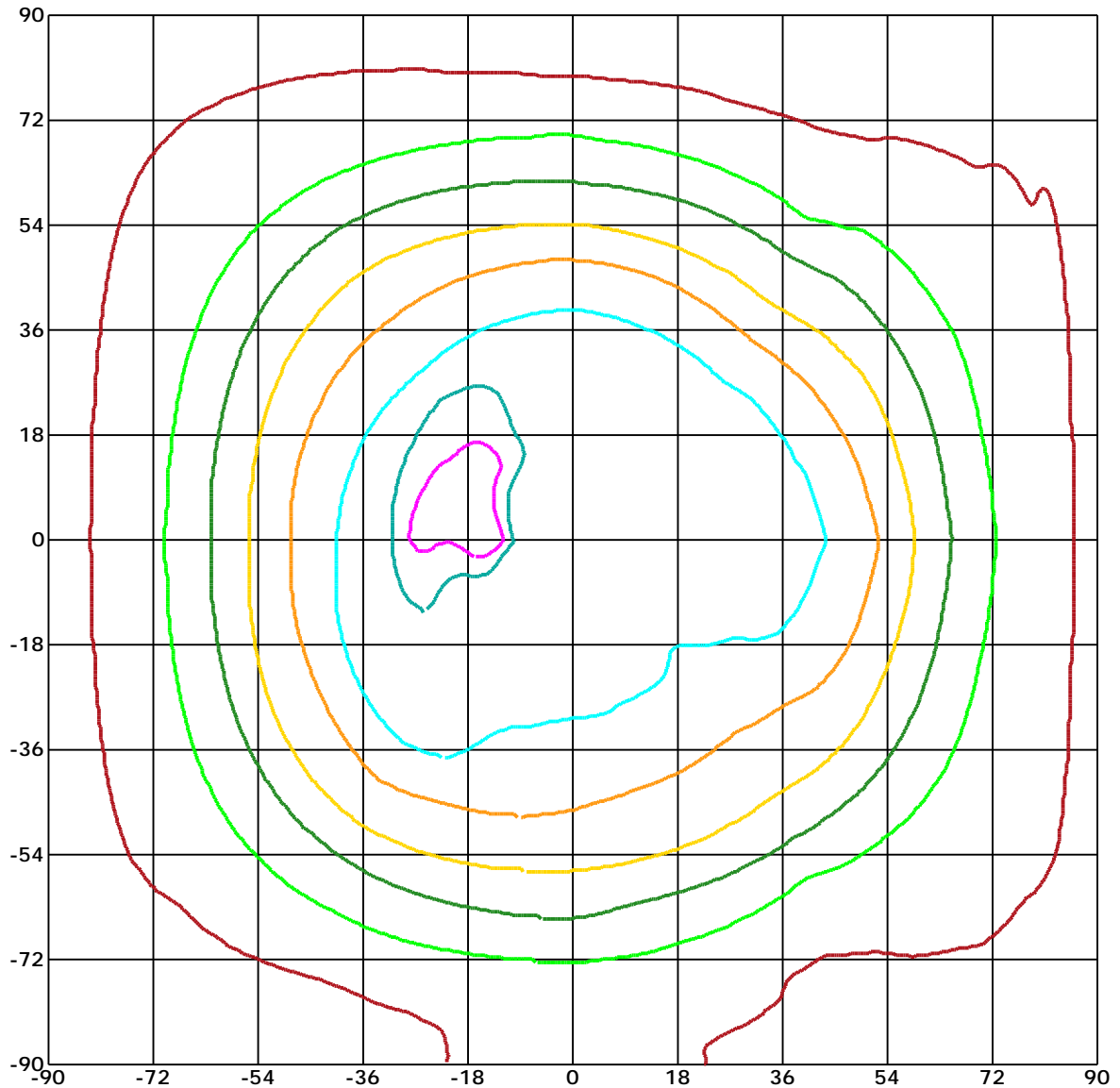
C Range: 0 - 360 Deg  
 C Interval: 45.0 Deg  
 Test Speed: High  
 Temperature:  
 Operators:  
 Test Date: 2019/11/4 9:32:52

G Range: 0 - 180 Deg  
 G Interval: 1.0 Deg  
 Test System: Huipu CPM-1800B Goniophotometer  
 Humidity:  
 Test Distance: 5.95 m  
 Remarks:

Report No.:

Test Time: 2019/11/4 9:32:52

## ISOCANDELA DIAGRAM (RECTANGULAR)



Unit of intensity:cd    I<sub>max</sub>(100%): 961.73 cd

- |                               |                               |
|-------------------------------|-------------------------------|
| 913.644(95%I <sub>max</sub> ) | 480.865(50%I <sub>max</sub> ) |
| 865.557(90%I <sub>max</sub> ) | 384.692(40%I <sub>max</sub> ) |
| 769.384(80%I <sub>max</sub> ) | 288.519(30%I <sub>max</sub> ) |
| 673.211(70%I <sub>max</sub> ) | 192.346(20%I <sub>max</sub> ) |
| 577.038(60%I <sub>max</sub> ) | 96.173(10%I <sub>max</sub> )  |

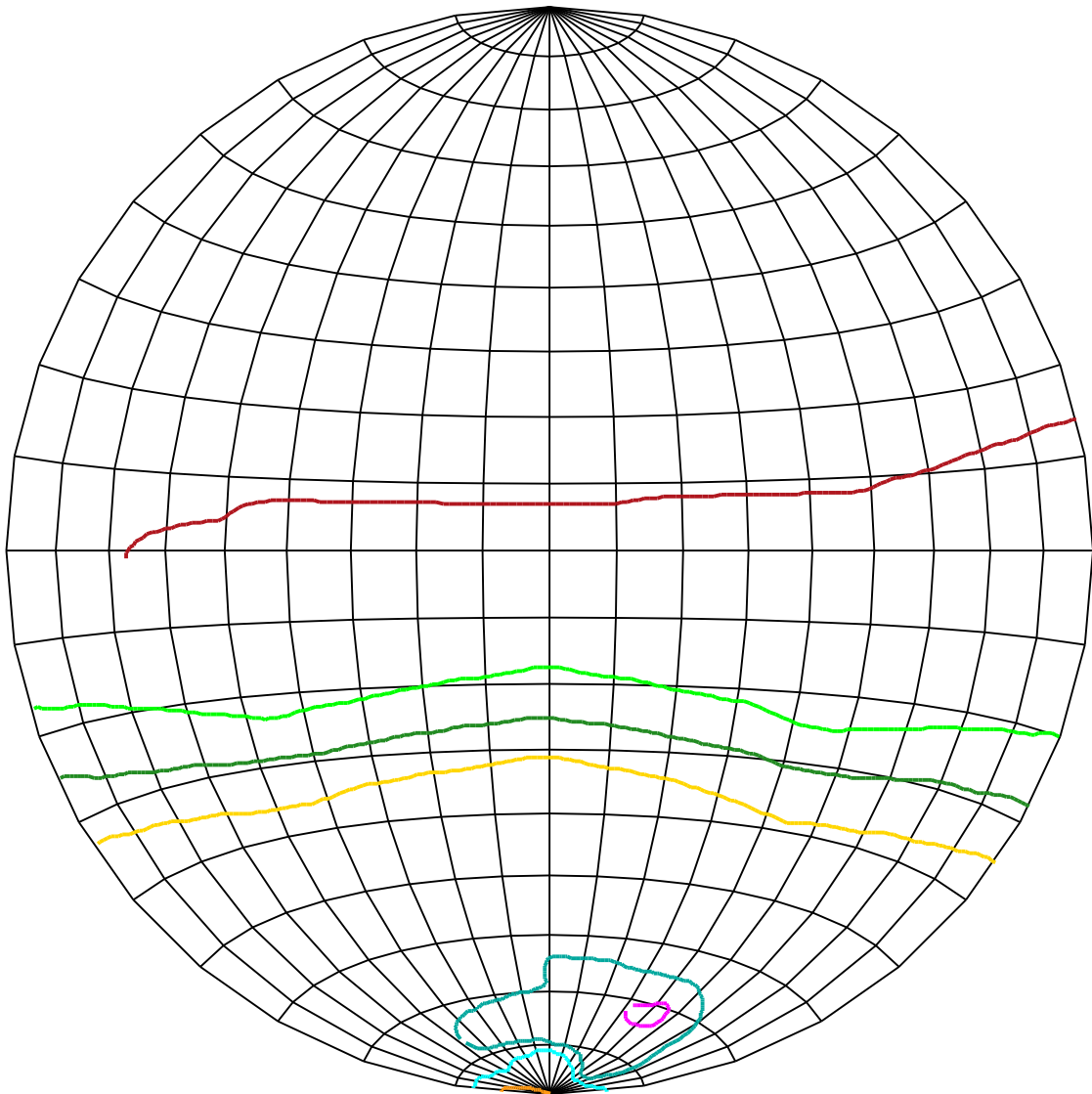
C Range: 0 - 360 Deg  
 C Interval: 45.0 Deg  
 Test Speed: High  
 Temperature:  
 Operators:  
 Test Date: 2019/11/4 9:32:52

G Range: 0 - 180 Deg  
 G Interval: 1.0 Deg  
 Test System: Huipu CPM-1800B Goniophotometer  
 Humidity:  
 Test Distance: 5.95 m  
 Remarks:

Report No.:

Test Time: 2019/11/4 9:32:52

### ISOCANDELA DIAGRAM (SPHERE)



Unit of intensity:cd    I<sub>max</sub>(100%): 961.73 cd

- |                                 |                                 |
|---------------------------------|---------------------------------|
| — 913.644(95%I <sub>max</sub> ) | — 480.865(50%I <sub>max</sub> ) |
| — 865.557(90%I <sub>max</sub> ) | — 384.692(40%I <sub>max</sub> ) |
| — 769.384(80%I <sub>max</sub> ) | — 288.519(30%I <sub>max</sub> ) |
| — 673.211(70%I <sub>max</sub> ) | — 192.346(20%I <sub>max</sub> ) |
| — 577.038(60%I <sub>max</sub> ) | — 96.173(10%I <sub>max</sub> )  |

C Range: 0 - 360 Deg

C Interval: 45.0 Deg

Test Speed: High

Temperature:

Operators:

Test Date: 2019/11/4 9:32:52

G Range: 0 - 180 Deg

G Interval: 1.0 Deg

Test System: Huipu CPM-1800B Goniophotometer

Humidity:

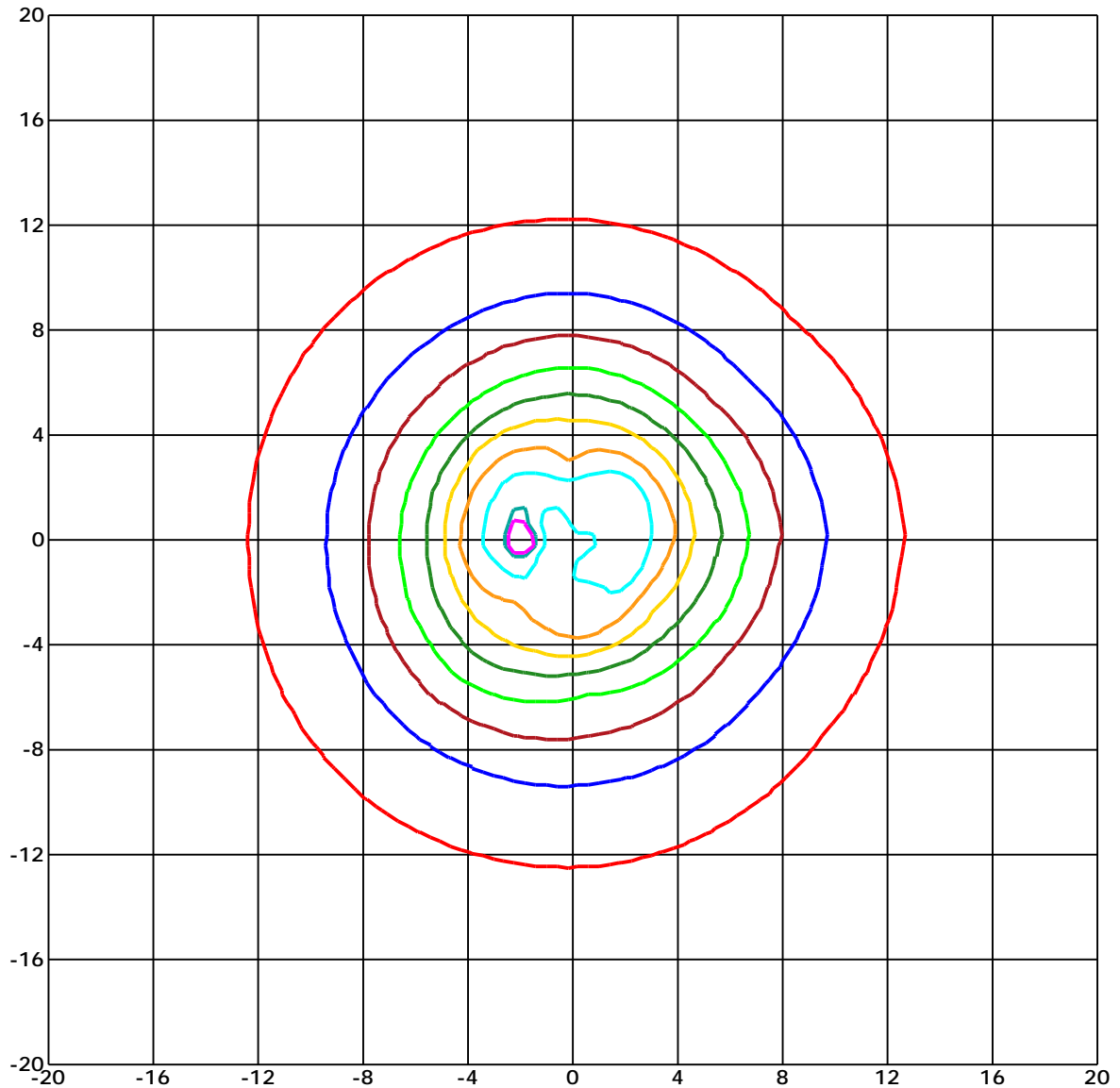
Test Distance: 5.95 m

Remarks:

Report No.:

Test Time: 2019/11/4 9:32:52

### ISOLX DIAGRAM



Unit of illumination: lx      Height of plane: 8.0(m)/26.25(ft)

- |                  |                 |
|------------------|-----------------|
| — 13.04(1%Emax)  | — 7.087(1%Emax) |
| — 12.756(1%Emax) | — 5.669(1%Emax) |
| — 11.339(1%Emax) | — 4.252(0%Emax) |
| — 9.921(1%Emax)  | — 2.835(0%Emax) |
| — 8.504(1%Emax)  | — 1.417(0%Emax) |

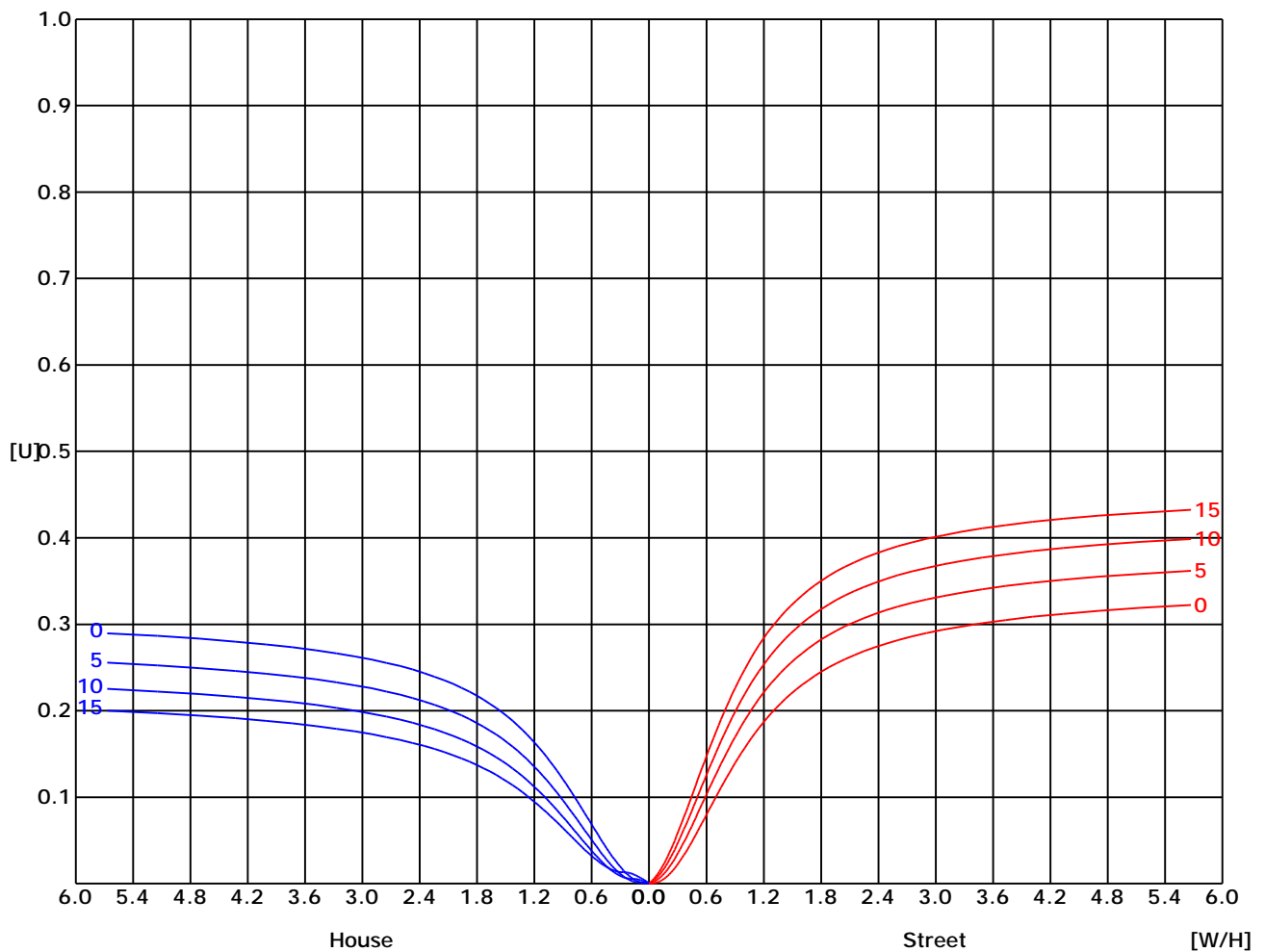
C Range: 0 - 360 Deg  
 C Interval: 45.0 Deg  
 Test Speed: High  
 Temperature:  
 Operators:  
 Test Date: 2019/11/4 9:32:52

G Range: 0 - 180 Deg  
 G Interval: 1.0 Deg  
 Test System: Huipu CPM-1800B Goniophotometer  
 Humidity:  
 Test Distance: 5.95 m  
 Remarks:

Report No.:

Test Time: 2019/11/4 9:32:52

## UTILIZATION FACTOR DIAGRAM (ROAD)



C Range: 0 - 360 Deg  
 C Interval: 45.0 Deg  
 Test Speed: High  
 Temperature:  
 Operators:  
 Test Date: 2019/11/4 9:32:52

G Range: 0 - 180 Deg  
 G Interval: 1.0 Deg  
 Test System: Huipu CPM-1800B Goniophotometer  
 Humidity:  
 Test Distance: 5.95 m  
 Remarks:

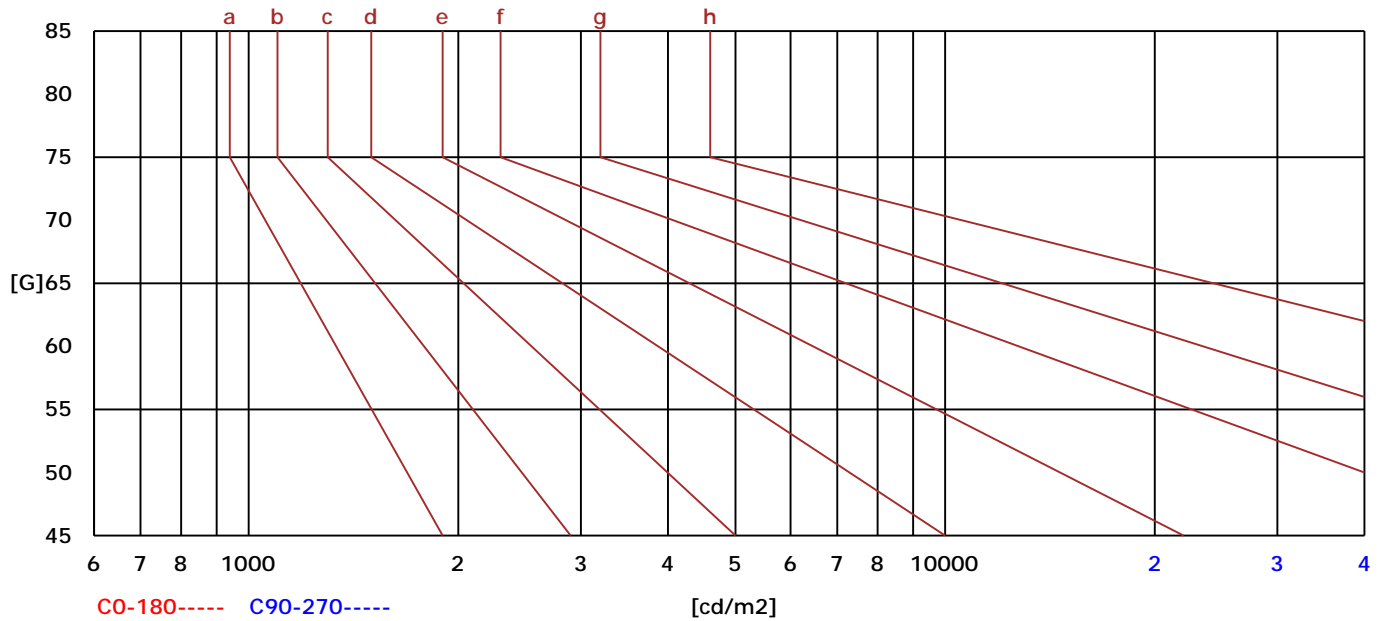


Report No.:

Test Time: 2019/11/4 9:32:52

### BRIGHT LIMIT DIAGRAM

C/G	45	50	55	60	65	70	75	80	85
C0	0	0	0	0	0	0	0	0	0
C90	0	0	0	0	0	0	0	0	0
Dazzle	Quality	Illuminance	---	---	---	---	---	---	---
1.15	A	2000	1000	500	<=300				
1.5	B		2000	1000	500	<=300			
1.85	C			2000	1000	500	<=300		
2.2	D				2000	1000	500	<=300	
2.55	E					2000	1000	500	<=300
---	---	a	b	c	d	e	f	g	h



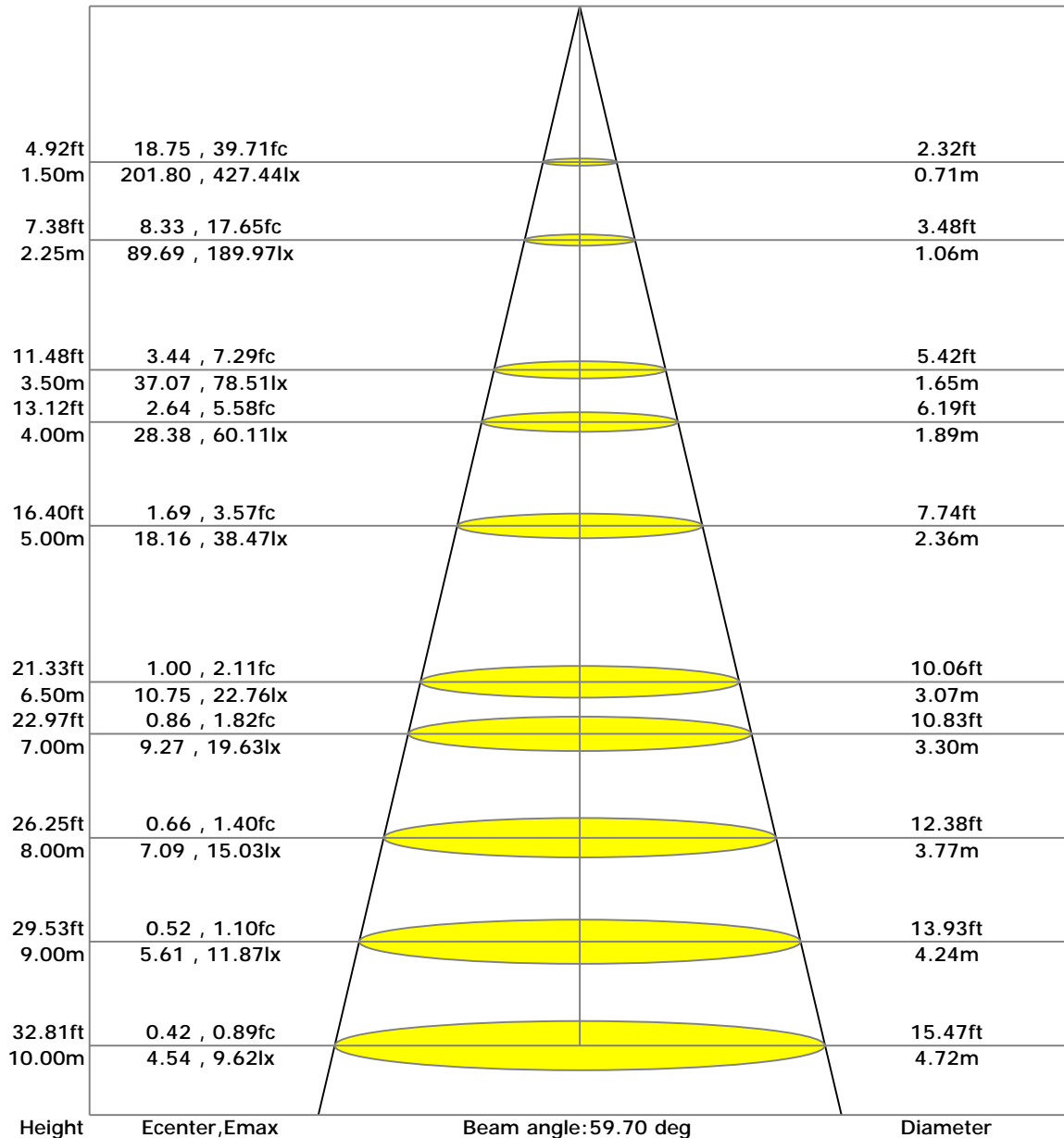
C Range: 0 - 360 Deg  
 C Interval: 45.0 Deg  
 Test Speed: High  
 Temperature:  
 Operators:  
 Test Date: 2019/11/4 9:32:52

G Range: 0 - 180 Deg  
 G Interval: 1.0 Deg  
 Test System: Huipu CPM-1800B Goniophotometer  
 Humidity:  
 Test Distance: 5.95 m  
 Remarks:

Report No.:

Test Time: 2019/11/4 9:32:52

### LX-DISTANCE DIAGRAM



C Range: 0 - 360 Deg  
 C Interval: 45.0 Deg  
 Test Speed: High  
 Temperature:  
 Operators:  
 Test Date: 2019/11/4 9:32:52

G Range: 0 - 180 Deg  
 G Interval: 1.0 Deg  
 Test System: Huipu CPM-1800B Goniophotometer  
 Humidity:  
 Test Distance: 5.95 m  
 Remarks:

Report No.:

Test Time: 2019/11/4 9:32:52

## UGR(Unified Glare Rating) TABLE

RHOCC		80	80	70	70	70	50	50	50	30	30
RHOW		50	30	10	50	30	10	50	30	10	50
RHOF		20	20	20	20	20	20	20	20	20	20
Room Size X Y		Weft to light axis direction of observation					Direction of light axis parallel observation				
2H	2H	19.24	18.95	18.73	18.97	18.66	18.39	18.29	17.94	17.63	17.40
	3H	17.55	17.20	16.95	17.36	16.94	16.62	16.82	16.32	15.91	16.10
	4H	16.27	15.91	15.66	16.12	15.67	15.34	15.69	15.12	14.66	15.09
	6H	15.27	14.92	14.68	15.15	14.69	14.37	14.79	14.18	13.72	14.29
	8H	14.48	14.14	13.92	14.38	13.92	13.62	14.06	13.44	12.99	13.63
	12H	13.84	13.51	13.31	13.74	13.30	13.01	13.46	12.85	12.41	13.08
4H	2H	13.31	13.00	12.81	13.21	12.79	12.52	12.96	12.35	11.93	12.61
	3H	12.86	12.58	12.40	12.77	12.37	12.11	12.53	11.94	11.54	12.21
	4H	12.49	12.22	12.05	12.40	12.01	11.77	12.16	11.59	11.21	11.86
	6H	12.17	11.91	11.76	12.08	11.71	11.48	11.84	11.29	10.93	11.56
	8H	11.90	11.65	11.51	11.80	11.45	11.24	11.56	11.04	10.69	11.29
	12H	11.66	11.43	11.29	11.56	11.23	11.02	11.32	10.81	10.49	11.05
8H	4H	11.45	11.23	11.10	11.34	11.03	10.84	11.10	10.62	10.31	10.83
	6H	11.27	11.06	10.94	11.16	10.86	10.67	10.91	10.45	10.15	10.64
	8H	11.10	10.91	10.79	10.99	10.70	10.53	10.74	10.29	10.01	10.47
	12H	10.96	10.77	10.66	10.84	10.57	10.40	10.59	10.16	9.89	10.31
12H	4H	10.83	10.65	10.54	10.71	10.45	10.29	10.45	10.03	9.78	10.17
	6H	10.71	10.54	10.44	10.59	10.34	10.19	10.32	9.93	9.68	10.04

C Range: 0 - 360 Deg  
 C Interval: 45.0 Deg  
 Test Speed: High  
 Temperature:  
 Operators:  
 Test Date: 2019/11/4 9:32:52

G Range: 0 - 180 Deg  
 G Interval: 1.0 Deg  
 Test System: Huipu CPM-1800B Goniophotometer  
 Humidity:  
 Test Distance: 5.95 m  
 Remarks:

Report No.:

Test Time: 2019/11/4 9:32:52

## ZONAL LUMINOUS FLUX TABLE

Gamma [deg]	I <sub>mean</sub> [cd]	Zonal Flux [lm]	Sum Flux [lm]	Zonal Flux [%]	Sum Flux [%]
0	589.38	0.00	0.00	0.00	0.00
5	649.75	15.23	15.23	0.26	0.26
10	769.49	53.16	68.40	0.89	1.15
15	836.36	97.67	166.07	1.64	2.79
20	853.31	140.34	306.41	2.36	5.16
25	846.10	177.67	484.08	2.99	8.15
30	828.93	211.80	695.88	3.56	11.71
35	794.94	237.53	933.41	4.00	15.71
40	760.73	257.05	1190.45	4.33	20.03
45	716.44	270.80	1461.25	4.56	24.59
50	657.22	272.97	1734.22	4.59	29.18
55	596.02	267.18	2001.40	4.50	33.68
60	527.56	253.62	2255.02	4.27	37.94
65	455.21	231.12	2486.15	3.89	41.83
70	391.21	207.54	2693.69	3.49	45.33
75	339.88	184.49	2878.18	3.10	48.43
80	301.49	166.91	3045.09	2.81	51.24
85	276.39	155.05	3200.14	2.61	53.85
90	267.80	147.79	3347.93	2.49	56.33
95	274.46	147.74	3495.68	2.49	58.82
100	291.54	155.88	3651.56	2.62	61.44
105	314.82	164.10	3815.66	2.76	64.21
110	349.30	176.95	3992.61	2.98	67.18
115	377.90	186.47	4179.08	3.14	70.32
120	410.42	194.53	4373.61	3.27	73.59
125	447.82	201.58	4575.19	3.39	76.99
130	476.05	203.60	4778.79	3.43	80.41
135	501.32	199.63	4978.42	3.36	83.77
140	523.45	191.58	5170.00	3.22	86.99
145	540.44	178.78	5348.78	3.01	90.00
150	532.21	157.83	5506.61	2.66	92.66
155	545.13	136.67	5643.28	2.30	94.96
160	541.55	114.39	5757.67	1.92	96.88
165	496.14	84.29	5841.96	1.42	98.30
170	462.60	56.13	5898.09	0.94	99.25
175	469.02	33.26	5931.35	0.56	99.81
180	493.49	11.56	5942.91	0.19	100.00

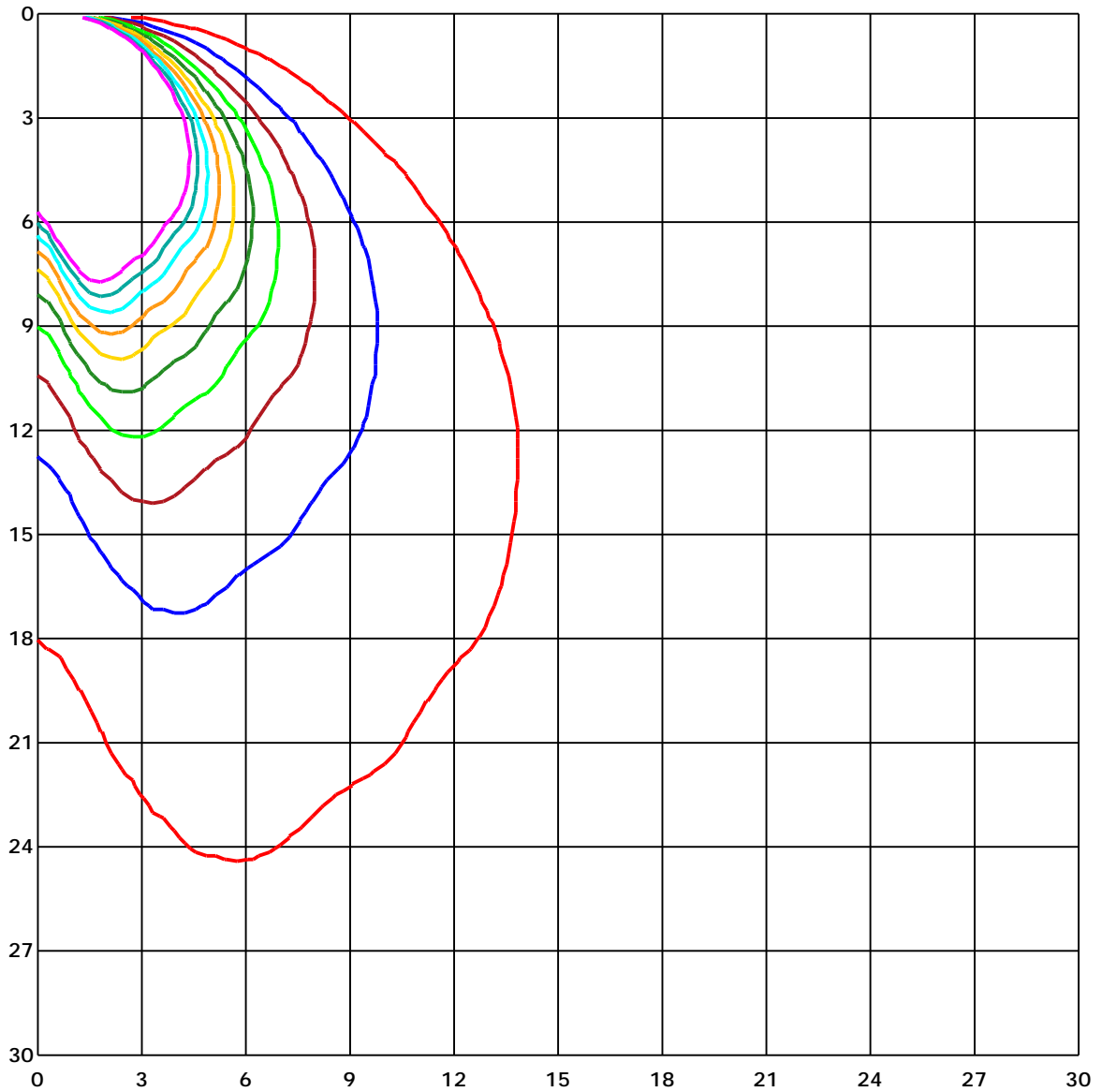
C Range: 0 - 360 Deg  
 C Interval: 45.0 Deg  
 Test Speed: High  
 Temperature:  
 Operators:  
 Test Date: 2019/11/4 9:32:52

G Range: 0 - 180 Deg  
 G Interval: 1.0 Deg  
 Test System: Huipu CPM-1800B Goniophotometer  
 Humidity:  
 Test Distance: 5.95 m  
 Remarks:

Report No.:

Test Time: 2019/11/4 9:32:52

### SPACE ISOLX DIAGRAM



Unit of illumination: lx

- |          |         |
|----------|---------|
| — 13.915 | — 6.957 |
| — 12.524 | — 5.566 |
| — 11.132 | — 4.174 |
| — 9.74   | — 2.783 |
| — 8.349  | — 1.392 |

C Range: 0 - 360 Deg  
 C Interval: 45.0 Deg  
 Test Speed: High  
 Temperature:  
 Operators:  
 Test Date: 2019/11/4 9:32:52

G Range: 0 - 180 Deg  
 G Interval: 1.0 Deg  
 Test System: Huipu CPM-1800B Goniophotometer  
 Humidity:  
 Test Distance: 5.95 m  
 Remarks:

Report No.:

Test Time: 2019/11/4 9:32:52

## LUMINOUS DISTRIBUTION INTENSITY DATA

Gamma/C	C0	C45	C90	C135	C180	C225	C270	C315	C360	
G0	454.06	602.39	619.74	681.34	454.06	602.39	619.74	681.34	454.06	
G1	467.87	664.0	646.65	667.18	464.33	576.55	611.25	698.34	467.87	
G2	478.49	697.27	680.99	660.45	471.41	539.02	611.95	707.89	478.49	
G3	517.07	769.85	698.34	651.25	512.47	521.32	622.57	727.72	517.07	
G4	541.5	833.57	732.68	645.94	538.67	516.01	651.96	737.63	541.5	
G5	599.21	861.19	747.9	644.17	602.75	507.16	691.26	760.64	599.21	
G6	660.81	903.32	771.26	643.82	638.86	505.04	711.08	771.97	660.81	
G7	691.96	917.48	778.35	650.9	715.68	509.29	746.84	793.57	691.96	
G8	753.21	934.12	788.26	659.39	788.97	515.66	770.2	813.39	753.21	
G9	778.7	936.95	793.57	685.24	820.83	542.92	774.1	823.66	778.7	
G10	831.45	934.82	794.28	720.29	872.16	590.0	769.14	842.42	831.45	
G11	865.79	924.2	796.4	740.46	891.99	618.68	741.88	852.69	865.79	
G12	876.76	913.58	797.46	782.59	923.5	673.55	724.53	866.14	876.76	
G13	895.17	910.04	797.46	825.08	945.09	698.34	690.55	871.81	895.17	
G14	905.79	906.5	796.05	844.19	953.59	737.63	676.39	870.75	905.79	
G15	907.21	909.69	794.63	876.76	961.73	754.63	679.57	866.14	907.21	
G16	905.09	913.23	789.67	889.51	957.84	757.46	706.83	863.31	905.09	
G17	895.53	920.31	785.07	907.21	952.88	762.41	750.73	858.35	895.53	
G18	889.86	923.85	773.03	917.83	939.07	765.95	772.68	849.15	889.86	
G19	878.18	923.14	762.41	921.02	925.62	766.66	807.02	842.42	878.18	
G20	869.33	917.48	758.87	922.43	920.31	769.14	818.7	827.2	869.33	
G21	866.14	905.44	756.4	921.73	913.58	772.33	834.99	818.35	866.14	
G22	865.44	897.65	761.71	919.25	913.94	773.74	844.9	802.42	865.44	
G23	868.62	881.72	768.08	916.77	916.41	779.76	847.03	785.07	868.62	
G24	870.04	874.64	781.53	913.94	921.37	784.36	846.32	776.58	870.04	
G25	870.04	861.19	793.21	908.63	926.33	794.98	844.55	764.54	870.04	
G26	866.5	854.11	797.46	905.79	926.68	805.61	836.41	759.58	866.5	
G27	854.11	842.78	803.84	901.9	920.66	816.58	829.68	758.52	854.11	
G28	839.24	836.05	809.15	900.13	913.94	821.89	812.33	755.69	839.24	
G29	833.57	833.93	811.62	896.24	896.94	828.62	778.35	752.15	833.57	
G30	825.43	828.26	814.1	889.86	886.68	831.45	778.35	750.73	825.43	
G31	822.24	824.01	813.39	884.55	862.96	837.82	758.17	745.77	822.24	
G32	820.12	814.81	812.33	871.1	842.78	841.72	746.84	739.05	820.12	
G33	820.83	803.48	808.08	861.9	832.87	842.07	724.89	736.22	820.83	
G34	824.01	797.82	805.96	841.01	814.46	841.01	704.35	730.91	824.01	
G35	826.49	779.05	800.29	816.93	807.38	839.95	696.57	728.43	826.49	
G36	825.43	779.05	797.11	806.31	797.82	834.64	687.71	724.89	825.43	

C Range: 0 - 360 Deg

C Interval: 45.0 Deg

Test Speed: High

Temperature:

Operators:

Test Date: 2019/11/4 9:32:52

G Range: 0 - 180 Deg

G Interval: 1.0 Deg

Test System: Huipu CPM-1800B Goniophotometer

Humidity:

Test Distance: 5.95 m

Remarks:

Report No.:

Test Time: 2019/11/4 9:32:52

## LUMINOUS DISTRIBUTION INTENSITY DATA(Continue 1)

GammaC	C0	C45	C90	C135	C180	C225	C270	C315	C360	
G37	454.06	602.39	619.74	681.34	454.06	602.39	619.74	681.34	454.06	
G38	467.87	664.0	646.65	667.18	464.33	576.55	611.25	698.34	467.87	
G39	478.49	697.27	680.99	660.45	471.41	539.02	611.95	707.89	478.49	
G40	517.07	769.85	698.34	651.25	512.47	521.32	622.57	727.72	517.07	
G41	541.5	833.57	732.68	645.94	538.67	516.01	651.96	737.63	541.5	
G42	599.21	861.19	747.9	644.17	602.75	507.16	691.26	760.64	599.21	
G43	660.81	903.32	771.26	643.82	638.86	505.04	711.08	771.97	660.81	
G44	691.96	917.48	778.35	650.9	715.68	509.29	746.84	793.57	691.96	
G45	753.21	934.12	788.26	659.39	788.97	515.66	770.2	813.39	753.21	
G46	778.7	936.95	793.57	685.24	820.83	542.92	774.1	823.66	778.7	
G47	831.45	934.82	794.28	720.29	872.16	590.0	769.14	842.42	831.45	
G48	865.79	924.2	796.4	740.46	891.99	618.68	741.88	852.69	865.79	
G49	876.76	913.58	797.46	782.59	923.5	673.55	724.53	866.14	876.76	
G50	895.17	910.04	797.46	825.08	945.09	698.34	690.55	871.81	895.17	
G51	905.79	906.5	796.05	844.19	953.59	737.63	676.39	870.75	905.79	
G52	907.21	909.69	794.63	876.76	961.73	754.63	679.57	866.14	907.21	
G53	905.09	913.23	789.67	889.51	957.84	757.46	706.83	863.31	905.09	
G54	895.53	920.31	785.07	907.21	952.88	762.41	750.73	858.35	895.53	
G55	889.86	923.85	773.03	917.83	939.07	765.95	772.68	849.15	889.86	
G56	878.18	923.14	762.41	921.02	925.62	766.66	807.02	842.42	878.18	
G57	869.33	917.48	758.87	922.43	920.31	769.14	818.7	827.2	869.33	
G58	866.14	905.44	756.4	921.73	913.58	772.33	834.99	818.35	866.14	
G59	865.44	897.65	761.71	919.25	913.94	773.74	844.9	802.42	865.44	
G60	868.62	881.72	768.08	916.77	916.41	779.76	847.03	785.07	868.62	
G61	870.04	874.64	781.53	913.94	921.37	784.36	846.32	776.58	870.04	
G62	870.04	861.19	793.21	908.63	926.33	794.98	844.55	764.54	870.04	
G63	866.5	854.11	797.46	905.79	926.68	805.61	836.41	759.58	866.5	
G64	854.11	842.78	803.84	901.9	920.66	816.58	829.68	758.52	854.11	
G65	839.24	836.05	809.15	900.13	913.94	821.89	812.33	755.69	839.24	
G66	833.57	833.93	811.62	896.24	896.94	828.62	778.35	752.15	833.57	
G67	825.43	828.26	814.1	889.86	886.68	831.45	778.35	750.73	825.43	
G68	822.24	824.01	813.39	884.55	862.96	837.82	758.17	745.77	822.24	
G69	820.12	814.81	812.33	871.1	842.78	841.72	746.84	739.05	820.12	
G70	820.83	803.48	808.08	861.9	832.87	842.07	724.89	736.22	820.83	
G71	824.01	797.82	805.96	841.01	814.46	841.01	704.35	730.91	824.01	
G72	826.49	779.05	800.29	816.93	807.38	839.95	696.57	728.43	826.49	
G73	825.43	779.05	797.11	806.31	797.82	834.64	687.71	724.89	825.43	

C Range: 0 - 360 Deg

C Interval: 45.0 Deg

Test Speed: High

Temperature:

Operators:

Test Date: 2019/11/4 9:32:52

G Range: 0 - 180 Deg

G Interval: 1.0 Deg

Test System: Huipu CPM-1800B Goniophotometer

Humidity:

Test Distance: 5.95 m

Remarks:

Report No.:

Test Time: 2019/11/4 9:32:52

## LUMINOUS DISTRIBUTION INTENSITY DATA(Continue 2)

GammaC	C0	C45	C90	C135	C180	C225	C270	C315	C360	
G74	454.06	602.39	619.74	681.34	454.06	602.39	619.74	681.34	454.06	
G75	467.87	664.0	646.65	667.18	464.33	576.55	611.25	698.34	467.87	
G76	478.49	697.27	680.99	660.45	471.41	539.02	611.95	707.89	478.49	
G77	517.07	769.85	698.34	651.25	512.47	521.32	622.57	727.72	517.07	
G78	541.5	833.57	732.68	645.94	538.67	516.01	651.96	737.63	541.5	
G79	599.21	861.19	747.9	644.17	602.75	507.16	691.26	760.64	599.21	
G80	660.81	903.32	771.26	643.82	638.86	505.04	711.08	771.97	660.81	
G81	691.96	917.48	778.35	650.9	715.68	509.29	746.84	793.57	691.96	
G82	753.21	934.12	788.26	659.39	788.97	515.66	770.2	813.39	753.21	
G83	778.7	936.95	793.57	685.24	820.83	542.92	774.1	823.66	778.7	
G84	831.45	934.82	794.28	720.29	872.16	590.0	769.14	842.42	831.45	
G85	865.79	924.2	796.4	740.46	891.99	618.68	741.88	852.69	865.79	
G86	876.76	913.58	797.46	782.59	923.5	673.55	724.53	866.14	876.76	
G87	895.17	910.04	797.46	825.08	945.09	698.34	690.55	871.81	895.17	
G88	905.79	906.5	796.05	844.19	953.59	737.63	676.39	870.75	905.79	
G89	907.21	909.69	794.63	876.76	961.73	754.63	679.57	866.14	907.21	
G90	905.09	913.23	789.67	889.51	957.84	757.46	706.83	863.31	905.09	
G91	895.53	920.31	785.07	907.21	952.88	762.41	750.73	858.35	895.53	
G92	889.86	923.85	773.03	917.83	939.07	765.95	772.68	849.15	889.86	
G93	878.18	923.14	762.41	921.02	925.62	766.66	807.02	842.42	878.18	
G94	869.33	917.48	758.87	922.43	920.31	769.14	818.7	827.2	869.33	
G95	866.14	905.44	756.4	921.73	913.58	772.33	834.99	818.35	866.14	
G96	865.44	897.65	761.71	919.25	913.94	773.74	844.9	802.42	865.44	
G97	868.62	881.72	768.08	916.77	916.41	779.76	847.03	785.07	868.62	
G98	870.04	874.64	781.53	913.94	921.37	784.36	846.32	776.58	870.04	
G99	870.04	861.19	793.21	908.63	926.33	794.98	844.55	764.54	870.04	
G100	866.5	854.11	797.46	905.79	926.68	805.61	836.41	759.58	866.5	
G101	854.11	842.78	803.84	901.9	920.66	816.58	829.68	758.52	854.11	
G102	839.24	836.05	809.15	900.13	913.94	821.89	812.33	755.69	839.24	
G103	833.57	833.93	811.62	896.24	896.94	828.62	778.35	752.15	833.57	
G104	825.43	828.26	814.1	889.86	886.68	831.45	778.35	750.73	825.43	
G105	822.24	824.01	813.39	884.55	862.96	837.82	758.17	745.77	822.24	
G106	820.12	814.81	812.33	871.1	842.78	841.72	746.84	739.05	820.12	
G107	820.83	803.48	808.08	861.9	832.87	842.07	724.89	736.22	820.83	
G108	824.01	797.82	805.96	841.01	814.46	841.01	704.35	730.91	824.01	
G109	826.49	779.05	800.29	816.93	807.38	839.95	696.57	728.43	826.49	
G110	825.43	779.05	797.11	806.31	797.82	834.64	687.71	724.89	825.43	

C Range: 0 - 360 Deg

C Interval: 45.0 Deg

Test Speed: High

Temperature:

Operators:

Test Date: 2019/11/4 9:32:52

G Range: 0 - 180 Deg

G Interval: 1.0 Deg

Test System: Huipu CPM-1800B Goniophotometer

Humidity:

Test Distance: 5.95 m

Remarks:



Report No.:

Test Time: 2019/11/4 9:32:52

### LUMINOUS DISTRIBUTION INTENSITY DATA(Continue 3)

GammaC	C0	C45	C90	C135	C180	C225	C270	C315	C360	
G111	454.06	602.39	619.74	681.34	454.06	602.39	619.74	681.34	454.06	
G112	467.87	664.0	646.65	667.18	464.33	576.55	611.25	698.34	467.87	
G113	478.49	697.27	680.99	660.45	471.41	539.02	611.95	707.89	478.49	
G114	517.07	769.85	698.34	651.25	512.47	521.32	622.57	727.72	517.07	
G115	541.5	833.57	732.68	645.94	538.67	516.01	651.96	737.63	541.5	
G116	599.21	861.19	747.9	644.17	602.75	507.16	691.26	760.64	599.21	
G117	660.81	903.32	771.26	643.82	638.86	505.04	711.08	771.97	660.81	
G118	691.96	917.48	778.35	650.9	715.68	509.29	746.84	793.57	691.96	
G119	753.21	934.12	788.26	659.39	788.97	515.66	770.2	813.39	753.21	
G120	778.7	936.95	793.57	685.24	820.83	542.92	774.1	823.66	778.7	
G121	831.45	934.82	794.28	720.29	872.16	590.0	769.14	842.42	831.45	
G122	865.79	924.2	796.4	740.46	891.99	618.68	741.88	852.69	865.79	
G123	876.76	913.58	797.46	782.59	923.5	673.55	724.53	866.14	876.76	
G124	895.17	910.04	797.46	825.08	945.09	698.34	690.55	871.81	895.17	
G125	905.79	906.5	796.05	844.19	953.59	737.63	676.39	870.75	905.79	
G126	907.21	909.69	794.63	876.76	961.73	754.63	679.57	866.14	907.21	
G127	905.09	913.23	789.67	889.51	957.84	757.46	706.83	863.31	905.09	
G128	895.53	920.31	785.07	907.21	952.88	762.41	750.73	858.35	895.53	
G129	889.86	923.85	773.03	917.83	939.07	765.95	772.68	849.15	889.86	
G130	878.18	923.14	762.41	921.02	925.62	766.66	807.02	842.42	878.18	
G131	869.33	917.48	758.87	922.43	920.31	769.14	818.7	827.2	869.33	
G132	866.14	905.44	756.4	921.73	913.58	772.33	834.99	818.35	866.14	
G133	865.44	897.65	761.71	919.25	913.94	773.74	844.9	802.42	865.44	
G134	868.62	881.72	768.08	916.77	916.41	779.76	847.03	785.07	868.62	
G135	870.04	874.64	781.53	913.94	921.37	784.36	846.32	776.58	870.04	
G136	870.04	861.19	793.21	908.63	926.33	794.98	844.55	764.54	870.04	
G137	866.5	854.11	797.46	905.79	926.68	805.61	836.41	759.58	866.5	
G138	854.11	842.78	803.84	901.9	920.66	816.58	829.68	758.52	854.11	
G139	839.24	836.05	809.15	900.13	913.94	821.89	812.33	755.69	839.24	
G140	833.57	833.93	811.62	896.24	896.94	828.62	778.35	752.15	833.57	
G141	825.43	828.26	814.1	889.86	886.68	831.45	778.35	750.73	825.43	
G142	822.24	824.01	813.39	884.55	862.96	837.82	758.17	745.77	822.24	
G143	820.12	814.81	812.33	871.1	842.78	841.72	746.84	739.05	820.12	
G144	820.83	803.48	808.08	861.9	832.87	842.07	724.89	736.22	820.83	
G145	824.01	797.82	805.96	841.01	814.46	841.01	704.35	730.91	824.01	
G146	826.49	779.05	800.29	816.93	807.38	839.95	696.57	728.43	826.49	
G147	825.43	779.05	797.11	806.31	797.82	834.64	687.71	724.89	825.43	

C Range: 0 - 360 Deg

C Interval: 45.0 Deg

Test Speed: High

Temperature:

Operators:

Test Date: 2019/11/4 9:32:52

G Range: 0 - 180 Deg

G Interval: 1.0 Deg

Test System: Huipu CPM-1800B Goniophotometer

Humidity:

Test Distance: 5.95 m

Remarks:

Report No.:

Test Time: 2019/11/4 9:32:52

## LUMINOUS DISTRIBUTION INTENSITY DATA(Continue 4)

GammaC	C0	C45	C90	C135	C180	C225	C270	C315	C360	
G148	454.06	602.39	619.74	681.34	454.06	602.39	619.74	681.34	454.06	
G149	467.87	664.0	646.65	667.18	464.33	576.55	611.25	698.34	467.87	
G150	478.49	697.27	680.99	660.45	471.41	539.02	611.95	707.89	478.49	
G151	517.07	769.85	698.34	651.25	512.47	521.32	622.57	727.72	517.07	
G152	541.5	833.57	732.68	645.94	538.67	516.01	651.96	737.63	541.5	
G153	599.21	861.19	747.9	644.17	602.75	507.16	691.26	760.64	599.21	
G154	660.81	903.32	771.26	643.82	638.86	505.04	711.08	771.97	660.81	
G155	691.96	917.48	778.35	650.9	715.68	509.29	746.84	793.57	691.96	
G156	753.21	934.12	788.26	659.39	788.97	515.66	770.2	813.39	753.21	
G157	778.7	936.95	793.57	685.24	820.83	542.92	774.1	823.66	778.7	
G158	831.45	934.82	794.28	720.29	872.16	590.0	769.14	842.42	831.45	
G159	865.79	924.2	796.4	740.46	891.99	618.68	741.88	852.69	865.79	
G160	876.76	913.58	797.46	782.59	923.5	673.55	724.53	866.14	876.76	
G161	895.17	910.04	797.46	825.08	945.09	698.34	690.55	871.81	895.17	
G162	905.79	906.5	796.05	844.19	953.59	737.63	676.39	870.75	905.79	
G163	907.21	909.69	794.63	876.76	961.73	754.63	679.57	866.14	907.21	
G164	905.09	913.23	789.67	889.51	957.84	757.46	706.83	863.31	905.09	
G165	895.53	920.31	785.07	907.21	952.88	762.41	750.73	858.35	895.53	
G166	889.86	923.85	773.03	917.83	939.07	765.95	772.68	849.15	889.86	
G167	878.18	923.14	762.41	921.02	925.62	766.66	807.02	842.42	878.18	
G168	869.33	917.48	758.87	922.43	920.31	769.14	818.7	827.2	869.33	
G169	866.14	905.44	756.4	921.73	913.58	772.33	834.99	818.35	866.14	
G170	865.44	897.65	761.71	919.25	913.94	773.74	844.9	802.42	865.44	
G171	868.62	881.72	768.08	916.77	916.41	779.76	847.03	785.07	868.62	
G172	870.04	874.64	781.53	913.94	921.37	784.36	846.32	776.58	870.04	
G173	870.04	861.19	793.21	908.63	926.33	794.98	844.55	764.54	870.04	
G174	866.5	854.11	797.46	905.79	926.68	805.61	836.41	759.58	866.5	
G175	854.11	842.78	803.84	901.9	920.66	816.58	829.68	758.52	854.11	
G176	839.24	836.05	809.15	900.13	913.94	821.89	812.33	755.69	839.24	
G177	833.57	833.93	811.62	896.24	896.94	828.62	778.35	752.15	833.57	
G178	825.43	828.26	814.1	889.86	886.68	831.45	778.35	750.73	825.43	
G179	822.24	824.01	813.39	884.55	862.96	837.82	758.17	745.77	822.24	
G180	820.12	814.81	812.33	871.1	842.78	841.72	746.84	739.05	820.12	

C Range: 0 - 360 Deg  
 C Interval: 45.0 Deg  
 Test Speed: High  
 Temperature:  
 Operators:  
 Test Date: 2019/11/4 9:32:52

G Range: 0 - 180 Deg  
 G Interval: 1.0 Deg  
 Test System: Huipu CPM-1800B Goniophotometer  
 Humidity:  
 Test Distance: 5.95 m  
 Remarks: